

## What are you into?

*Pender's Has Sheet Music  
for Every Style*



MUSIC FOR BAND, CHOIR, AND ORCHESTRA  
IN ALL GENRES, FOR ALL INSTRUMENTS

Large on-hand inventory of sheet music

*Knowledgeable staff available for personal assistance*

Music theory books and texts

*Musical accessories and gifts*

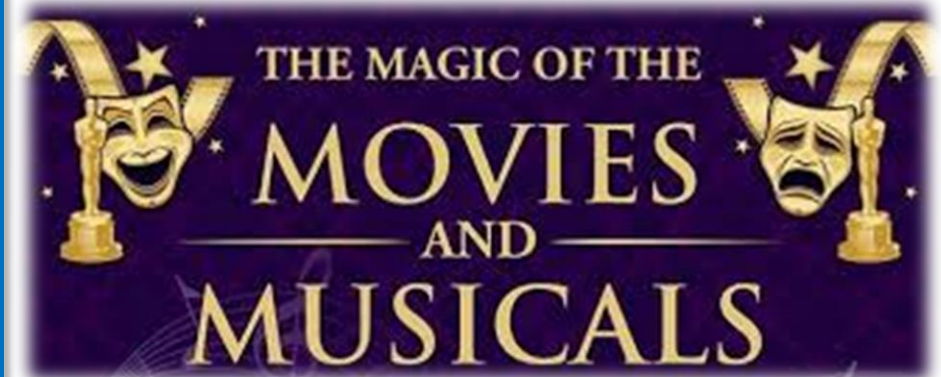


*fluent in the universal language*

**WWW.PENDERS.COM**

*Let us personally assist you. Call or visit one of our locations:*

314 South Elm | Denton, Tx 76201  
Denton Area: **940-382-7124**  
Toll-Free: **800-772-5918**



## *Honoring Educators Past and Present*

February 28, 2020 • 7:30 p.m.  
Allen Public Library • Civic Auditorium  
300 North Allen Drive • Allen, TX



**Quality Tours  
Since 1971**

**Craig & Pat Logan**  
*Your Friends in Travel*

**Planning your next trip just got easier...  
Contact our office in Allen!**

- Vacation Packages
- Charter Packages
- Weekend Get-A-Ways
- Escorted Tours
- Cruises
- Honeymoon Packages
- Family Reunions
- Groups

**When you travel with us – you get the BEST !**

**www.allworldtravel.com**



Office Address:  
401 W. Main St., Suite 100  
Allen, TX 75013



Mailing Address:  
P.O. Box 1606  
Allen, TX 75013

**Local: 214-509-9078**

**Toll-Free: 866-298-6067**

**For information: CraigL@allworldtravel.com**

## Acknowledgements



The Allen Community Band extends a very heartfelt thank you to all those who donated to the Band on North Texas Giving Day. Your generous contributions allow us to continue to provide quality musical performances for Allen and surrounding communities by purchasing music and small specialty instruments, as well as helping to cover our operating expenses.



The Allen Community Band would like to thank the Food For Thought Market & Café. The Café partners with the Band for special events to provide delicious food and expert service. In addition, the Food For Thought Market & Café is also working with the Band to provide a discount for all Friends of the Band members at the Vivace level and higher. The Band truly appreciates the support of the Food For Thought Market & Café!

### Band Media

The **Band** would like to acknowledge and especially thank those who spend dedicated time on media for the Band. Your hard work does not go unnoticed and is very much appreciated!

**Formal Photographer / Video / Audio:**  
Jim Hoffeins

**Performance Photographer:**  
Mary Claire March

**Webmaster:**  
Jerry Mishork

# Acknowledgements

**Allen Public Library** – Jeff Timbs, Director  
Tom Keener, Cultural Arts Manager  
Kevin Vaught, Audio/Visual support  
Aron Seeley, Audio/Visual support

**Friends of the Allen Public Library** – Susan Jackson, President

**City of Allen** – Steve Terrell, Mayor; Eric Ellwanger, City Manager

---

The Allen Community Band wishes to thank those listed below for their continued support.

**Christ the Servant Lutheran Church**  
Gordon Illausky, Senior Pastor

**All World Travel and Tours**  
Charles Moore, President

**Pender's Music**  
Richard Gore, President

**Consultants to Mr. Logan**  
Dr. Jim Lee  
Ray Akin

**Brook Mays Music Company**  
Bill Everett, President  
Betsey E. Taylor, Vice President

**Special Thanks**  
Pat Logan  
Tony Fugate

**Band Shirts by PEPWEAR**  
Craig Johnson, CEO  
Becky Seeton, Vice President Sales  
Michelle Owens, ACB Representative

**Band Logo Design**  
Travis Burnett, President, MiHi Creative

---

The Band would also like to say a big "Thank You" to our dedicated volunteers. We appreciate you all very much!

**Adult Volunteers**  
Tony Fugate  
Karen Perry

**Student Volunteers**  
Cameron Purcell  
Jacob Groves  
Matthew Waterman Caldarola  
Aidan Travis

# BROOK MAY'S MUSIC COMPANY

Supporting the Allen Community Band



**Warehouse/Outlet**  
8605 Carpenter Frwy.  
Dallas, TX 75247  
p. 214.905.8614  
f. 800.637.9399  
p. 800.637.8966

**Arlington**  
3801 S. Cooper St.  
Suite 117  
Arlington, TX 76015  
p. 817.468.1500  
f. 817.468.1508

**North Dallas**  
5756 LBJ Freeway  
Dallas, TX 75240  
p. 972.233.9633  
f. 972.233.1857

**Plano**  
6921 Independence  
Pkwy. Suite 120  
Plano, TX 75023  
p. 972.618.3222  
f. 972.618.2999

## Friends of the Allen Community Band

The **Allen Community Band** gratefully acknowledges the following individuals, families, and companies who support us through the **Friends of the Band** program:

### Andante

Sandra Duncan  
Jan Dungan

### Vivace

David & Gail Bell  
Neil Muranaka  
Michelle & Terry Sigle  
Doug & Marilyn Tillet  
Catlett Law Firm

### Presto

Richard & Jill Lorenz  
Dr. E.T. Boon

### Allegro

Jo Long

### Virtuoso

Robert Acker  
Tony Fugate

---

As a Friend of the **Allen Community Band**, your membership supplies the funds needed for the Band to continue to grow and remain a vital part of the Allen community. Several membership levels are available with a variety of perks, in addition to supporting outstanding musical talent.

**Allen Community Band** is a 501(c)(3) organization and as such, your donations are tax deductible. For more information about becoming a Friend of the Band, pick up a brochure or visit our website: [www.AllenCommunityBand.com](http://www.AllenCommunityBand.com).

---



***Did you know you can support the Allen Community Band while shopping online with Amazon?***

Simply go to [smile.amazon.com](http://smile.amazon.com), log in with your normal Amazon account, then select the Allen Community Band as the organization you would like to support. When shopping, log into [smile.amazon.com](http://smile.amazon.com) and Amazon will donate a small portion of your purchase to the Band!

## ACB Jazz Band Craig Logan, Director

The **ACB Jazz Band** is composed of members from the Allen Community Band who also enjoy performing jazz music. Interested in joining the jazz band? Visit our website: [www.allencommunityband.com](http://www.allencommunityband.com) and click on Jazz Band.

### Alto Saxophone

Jen McDonald  
Mark Woodard

### Trumpet

Mike Angel  
Mark Hardwick  
Tom Marshall

### Guitar

Todd Hartsell

### Tenor Saxophone

Mark Newcome  
Will Perry

Neil Muranaka

Kevin Purcell  
Stephanie Waterman

### Bass

Jerry Mishork

### Percussion

Steven Luke

### Baritone Saxophone

John Regina

### Trombone

Warren Brooks  
Tony Densmore  
William Jones  
David Ray

### Keyboard

Will Bogue

---

# Allen Community Band

## Craig Logan, Director

### Flute/Piccolo

Martha Bahnman  
 Caroline Barnes  
 Julie Bell \*  
 Jaclyn Bradford \*  
 Kristin Groves \*  
 Megan Krouse \*  
 Rachelle Pruden \*  
 Diana Sparacin  
 Denise Webre \*  
 Hanna Yassney

### Oboe

Mark Phillips

### Clarinet

Jeannine Boss  
 Charlotte Catlett \*  
 Mika Graham \*  
 Jim Hoffheins \*  
 Amy Krajewski  
 Ken Levin  
 Becky Malooly \*  
 Jill Pendergast  
 John Platt  
 Terry Sigle

### Alto/Bass Clarinet

Mark Newcome \*  
 Jim Popelarski

### Bassoon

Andrew Balber

### Soprano Saxophone

Sandra Osborn \*

### Alto Saxophone

David Arango  
 Jake Griffin  
 Jen McDonald  
 Brent Schoonover  
 Karen Terrell  
 Troy Webre \*  
 Mark Woodard \*

### Tenor Saxophone

Adam Chismar  
 Will Perry \*

### Baritone Saxophone

John Regina  
 Mike Rightmire

### Trumpet

Mike Angel \*  
 Matt Appleby  
 Al Carnley  
 Aaron Field  
 Forrest Goings  
 Mark Hardwick \*  
 Tom Marshall  
 Jerry Mishork \*  
 Neil Muranaka  
 Tom Puhala \*  
 Kevin Purcell \*  
 John Short  
 Stephanie Waterman \*

### French Horn

Kimberly Allie  
 Trent Ballew \*  
 Archie Beckett  
 Ross Cornell  
 Jonna Edwards  
 Candy George  
 Pete March \*

### Trombone

Warren Brooks \*  
 Tony Densmore  
 Bruce Elliott \*  
 Sandy Lauder  
 Kimberly Logan  
 Thomas Menini  
 David Ray \*

### Euphonium

Michael Booth \*  
 Richard Durham  
 William Jones  
 Wayne Westfield

### Tuba

Nicholas Carroll \*  
 Cable Deweese  
 Wayne Terrell \*

### Percussion

Steven Luke \*  
 Alexandria Pruden  
 Jerry Wyatt

### Keyboard

Will Bogue

\* Denotes Charter Members

# Upcoming Concerts and Events

## Allen Community Band

### Spring Concert

Friday, May 29, at 7:30pm, Allen Public Library Auditorium  
 Concerts are traditionally well attended. Arrive early to get the best seats!

## Allen Public Library

### *A Family for Baby Grand: Concerts for Young Audiences*

Saturday, March 7, at 3:00pm

The Allen Philharmonic presents their spring Concerts for Young Audiences performance. Special guest soloist will be Derek He. Pre-concert activities will feature the Instrument Petting Zoo in the Meeting Room.

### *John Balaban*

Thursday, March 12, at 7:30pm

Award-winning author John Balaban discusses his books "Empires," "Locusts at the Edge of Summer: New and Selected Poems" and others. John is the author of 12 books of poetry and prose, including four volumes which together have won the Academy of American Poets' Lamont prize.

### *Skeleton McKee – Celtic Night*

Saturday, March 14, at 7:30pm

Celebrate Allen Public Library's annual Celtic Night with a performance from Skeleton McKee.

### *Daily Life in the Scottish Highlands*

Thursday, March 26, at 7:30pm

Learn about the Scottish Highlands with Sharon Hudgins. Sharon looks beyond the stereotypes about Scotland to show how people have lived in the Highlands from the Stone Age to the present. She also shares her own personal stories about daily life in an old stone cottage on the remote and rugged North coast of Scotland.

### *Apollo 13 – A Miracle in Outer Space*

Thursday, April 9, at 7:30pm

Listen to writer-historian Rusty Williams tell his story of witnessing the events that eventually brought the astronauts of Apollo 13 home safely. Former KERA-FM news editor B.J. Austin will interview Williams on-stage.

# Allen Community Band

The Allen Community Band was established in 2013. Membership is open to adults in Allen and surrounding communities who have experience playing in a band and would enjoy performing music with a group for community events. All instruments and skill levels are welcome and there is no limit on the number of players.

**Join us! • Rehearsals – Tues. 7:00-9:00pm**

Christ the Servant Lutheran Church  
821 S. Greenville Ave. • Allen, Tx 75002  
[www.allencommunityband.com](http://www.allencommunityband.com)  
[www.facebook.com/AllenCommunityBand](https://www.facebook.com/AllenCommunityBand)

---

## Board Members

### President/Director

Craig Logan

### Treasurer

Charlotte Catlett  
Warren Brooks

### Secretary / Historian / Fund Raising

Rachelle Pruden

### Band Membership / Friends of the Band

Jaclyn Bradford

### Music Librarian / Media and Programs

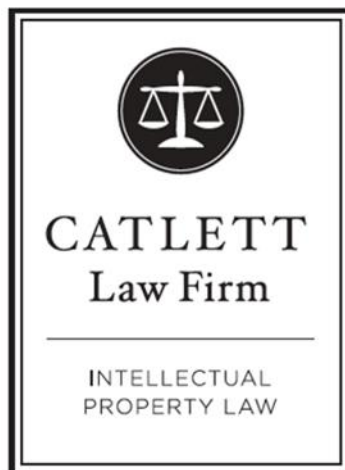
Kristin Groves

### Logistics

Will Perry

### At Large

Michael Booth



# Program Notes

**Symphonic Dances from “Fiddler on the Roof”** – *Fiddler on the Roof* is a musical with music by Jerry Bock, lyrics by Sheldon Harnick, and book by Joseph Stein, set in the Pale of Settlement of Imperial Russia in or around 1905. It is based on *Tevye and his Daughters* and other tales by Sholem Aleichem. The story centers on Tevye, the father of five daughters, and his attempts to maintain his Jewish religious and cultural traditions as outside influences encroach upon the family's lives. He must cope both with the strong-willed actions of his three older daughters, who wish to marry for love – each one's choice of a husband moves further away from the customs of their Jewish faith and heritage – and with the edict of the Tsar that evicts the Jews from their village.

The original Broadway production of the show, which opened in 1964, had the first musical theatre run in history to surpass 3,000 performances. *Fiddler* held the record for the longest-running Broadway musical for almost 10 years until *Grease* surpassed its run. The production was extraordinarily profitable and highly acclaimed. It won nine Tony Awards, including best musical, score, book, direction and choreography. It spawned five Broadway revivals and a highly successful 1971 film adaptation and has enjoyed enduring international popularity.

This landmark Broadway musical includes marvelous dance sequences with unique ethnic stylings. “Symphonic Dances from “Fiddler on the Roof”” is comprised of the rousing “To Life” and “Tradition”, the tender “Chava Sequence” and “Perchik and Hodel Dance”, and the signature “Wedding Dance (Bottle Dance)”.

**That’s Entertainment** – A medley arranged by Warren Barker, “That’s Entertainment” is comprised of songs that are considered anthems for Hollywood. They are also staple soundtrack elements of any Academy Awards ceremony. This piece includes: “Another Op’nin’, Another Show” from *Kiss Me, Kate*; “Let Me Entertain You” from *Gypsy*; and “That’s Entertainment” from *The Band Wagon*.

## Program Notes

**Ode to Saturday Night** – Composed by John Swinson, “Ode to Saturday Night” was written for a proposed comic Western film titled *Far Out West*, which was never completed. Mr. Swinson sent the score to Mr. Chris Xeros for consideration to be performed by the Richardson Symphony. Programming did not prove possible and the score remained in Mr. Xeros’ library until early 2015 when he suggested to Mr. Logan that the Band might like to perform it. Mr. Logan immediately enlisted the help of Ray Akin, a Dallas band director and well known arranger to set “Ode to Saturday Night” for Wind Band. A little over a year later, and it was complete. The Allen Community Band performed the world premiere of “Ode to Saturday Night”, under the direction of Mr. Chris Xeros, on February 29, 2016. Tonight, in honor of Mr. Xeros, the Band will perform this piece under the direction of guest conductor and arranger, Mr. Ray Akin.

**Cell Block Tango** – The longest-running American musical in Broadway history, *Chicago* is based on a 1926 play about actual criminals and features the work of legends composer John Kander, lyricist Fred Ebb, and choreographer Bob Fosse. The story is a satire on corruption in the administration of criminal justice and the concept of the "celebrity criminal". Music from this Tony award-winning show harkens back to the early jazz age and raucous life style of gangster-era Chicago. The song “Cell Block Tango” takes place in the Cook County Jail women’s annex. Six women explain their presence in the jail, all of whom stand accused of killing their significant others. “He had it coming” is a refrain throughout the number, as each think their crime was justified.

## Ray Akin Guest Conductor

**Ray Akin** is a Dallas native and a graduate of S.M.U. His career in the music business includes performing, conducting, arranging, and music education.

As a performer, he played with the Glenn Miller Orchestra and La Sonora International as well as his own group, The Ray Akin Orchestra. His musical arrangements have been performed by professional bands, schools, churches, and community organizations. He taught instrumental music in Dallas ISD for thirty years before retiring in 2017.

Ray currently arranges for and performs in several local bands and continues to enjoy his long association with Craig Logan and the Allen Community Band.

The Allen Community Band is honored to welcome Mr. Ray Akin as our guest conductor during today’s concert.

---

## Allen Retired Educators Association

AREA (Allen Retired Educators Association) is a local unit of TRTA (Texas Retired Teachers Association). AREA consists of retired educators and friends of educators. We are committed to help advance the interests and welfare of past, present, and future educators by encouraging them to give voluntarily of their time, talents, and experience in furthering educational and civic endeavors.

Information and membership forms are available in the lobby.

## Movies & Musicals Concert

<b>Opening</b>	<b>Tom Keener</b> <i>Cultural Arts Manager, Allen Public Library</i>
<b>Special Guest</b>	<b>The Honorable Steve Terrell</b> <i>Mayor, City of Allen</i>
<b>Presentation of Colors</b>	<b>VFW Armistice Memorial Post 2195</b> <i>Curtis Mitchell, Post Commander</i> <i>Frank Stepka, Color Guard Commander</i>
<b>Pledge of Allegiance</b>	<b>Warren Brooks</b> <i>Principal Trombone, ACB</i>
<b>Star Spangled Banner</b>	Arr. John Philip Sousa, Walter Damrosch
<b>A Broadway Tribute</b>	Arr. Elliot Deg Borgo
<b>Gershwin Prelude Suite</b>	George Gershwin / Arr. Elena Roussanova Lucas
<b>Ode to Saturday Night</b>	John Swinson / Arr. Ray Akin <i>Ray Akin, Guest Conductor</i>
<b>Cell Block Tango</b>	John Kander / Arr. Dave Henning
<b>Symphonic Dances from "Fiddler on the Roof"</b>	Jerry Bock Arr. Ira Hearshen <i>Charlotte Catlett, Clarinet Soloist</i> <i>Jill Pendergast, Clarinet Soloist</i> <i>John Platt, Clarinet Soloist</i> <i>Kevin Purcell, Trumpet Soloist</i> <i>Stephanie Waterman, Trumpet Soloist</i> <i>Kristin Groves, Flute Soloist</i> <i>Ross Cornell, Horn Soloist</i>
<b>That's Entertainment</b>	Arr. Warren Barker <i>Mark Woodard, Saxophone Soloist</i>

## Program Notes

**The Star-Spangled Banner** – Written by Francis Scott Key, an attorney and gifted amateur poet, while watching the British bombard Fort McHenry in Baltimore Harbor during the War of 1812. This is the first concert-sized publication of the superb Sousa-Damrosch "The Star-Spangled Banner", and remains one of the most standard and sing-able arrangements of the United States National Anthem. It was harmonized in 1917 by Walter Damrosch and skillfully arranged by John Philip Sousa.

**A Broadway Tribute** – George Cohan was one of the most important contributors of exciting music for Broadway stages in the first half of the 20th century. Known in the decade before World War I as "the man who owned Broadway", he is considered the father of American musical comedy. A statue of Cohan in Times Square in New York City commemorates his contributions to American musical theatre. "A Broadway Tribute", arranged by Elliot Del Borgo, is a medley of three of Cohan's most stirring tunes: "Yankee Doodle Boy", "Give My Regards to Broadway", and "You're a Grand Old Flag".

**Gershwin Prelude Suite** – George Gershwin's beloved *Three Piano Preludes* are brought to life in a through-composed contemporary setting for concert band. *Three Piano Preludes* are short piano pieces by George Gershwin, which were first performed by the composer at the Roosevelt Hotel in New York City in 1926. Each prelude is a well-known example of early-20th-century American classical music, as influenced by jazz. Gershwin originally planned to compose 24 preludes for this group of works. The number was reduced to seven in manuscript form, and then reduced to five in public performance, and further decreased to three when first published in 1926. Gershwin dedicated his Preludes to friend and musical advisor Bill Daly.

"Prelude I" begins with a five-note blues motif. Then, virtually all the melodic material in the piece is based on this theme.

"Prelude II (Blue Lullaby)" also has the distinct flavor of jazz. The piece begins with a subdued melody winding its way above a smooth, steady bassline. Gershwin himself referred to the piece as "a sort of blues lullaby." "Prelude III (Spanish Prelude)" Gershwin called this prelude "Spanish", but modern ears may find the description puzzling. After a brief and dramatic introduction, the main theme is revealed: two melodies that together form a question-and-answer pair. The "question" is harmonized using E-flat minor chords, the "answer" by E-flat major chords.